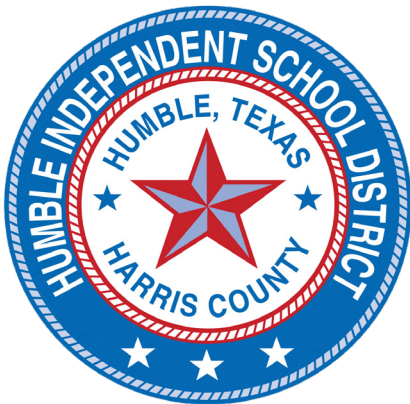


Employee Health Benefits 2025-26



Humble ISD Which Plan is Right for You?



Questions to Consider

- How much coverage do I need?
- How often do I access health care?
- Are my doctors in-network?
- Do I prefer higher premiums or pay as I go?
- Do I have regular prescriptions?

Benefits for UBC Members

The Cigna Open Access Plus Network provides you with access to healthcare professionals nationwide to address your health concerns. The UBC plans offer a range of coverage options to best meet the needs of you and your family. This provides you a great deal of flexibility and the option to save significantly on your health insurance premiums.

Choice and Control

The Cigna Open Access Plus Network provides access to 17,000 facilities and more than 1,000,000 healthcare professionals.

Need Assistance?
help@UBC-Benefits.com

- Cigna Nationwide Network with more than one million healthcare professionals
- No referral necessary to see a specialist
- Lower deductible when using Memorial Hermann network
- Lower Out-of-Pocket maximums
- Two options for In-Network benefit
- Access to Next Level Urgent Care/Clinics



HD - Medical Plan

Overview

The Humble ISD HD Plan serves as the primary High Deductible plan option with low-cost monthly premiums and out-of-pocket maximums in exchange for higher annual deductibles. With two options for in-network benefits, no need for physician referrals, and an integrated drug deductible, this plan provides the highest premium savings to plan members with the greatest overall annual savings potential.

Covered	Monthly Premium
• Employee	• \$35
• Employee + Spouse	• \$650
• Employee + Child(ren)	• \$305
• Employee + Family	• \$793



HD - Plan quick-reference

Refer to plan documents for limitations and additional information.

HD - Medical Plan

Features	Your Memorial Hermann Health Network Costs	Your Cigna Network Costs	Your Out-of-Network Costs
Annual Deductible	\$2,000 individual \$4,000 family	\$4,000 individual \$8,000 family	No Coverage
Coinsurance (after the annual deductible)	25% after deductible	25% after deductible	No Coverage
Annual Out-of-Pocket Maximum	\$8,000 individual \$16,000 family	\$8,000 individual \$16,000 family	No Coverage
Physician Services			
Office Visits - Primary	25% after deductible	25% after deductible	No Coverage
Office Visits - Specialist	25% after deductible	25% after deductible	No Coverage
Next Level Urgent Care/Clinics	\$25 copay/100% after deductible	\$25 copay/100% after deductible	N/A
Urgent Care Visits	25% after deductible	\$80 copay, then 25% after deductible	No Coverage
Emergency Care (True Emergency Only)	25% after deductible	25% after deductible	No Coverage
Non-Emergency use of Emergency Care	50% after deductible	50 % after deductible	No Coverage
Prescription Drugs			
Drug Deductible	Integrated with CIGNA medical deductible. CIGNA Deductible must be met before benefit applies		
Generic (30/90 Day Supply)	\$0 Retail and Mail Order (after deductible)		
Preferred Brand	30% Retail / \$400 Mail Order (after deductible)		
Non-Preferred Brand	30% Retail / \$400 Mail Order (after deductible)		
Specialty	30% up to a max of \$1,500 per month (after deductible)		
International Mail-Order	\$0 Brand/Specialty (after deductible)		

Refer to plan documents for limitations and additional information.

HD - Medical Plan (continued)

Features	Your Memorial Hermann Health Network Costs	Your Cigna Network Costs	Your Out-of-Network Costs
----------	--	--------------------------	---------------------------

Maternity Services

Routine Prenatal Care	25% after deductible	25% after deductible	No Coverage
Delivery in Hospital	25% after deductible	25% after deductible	No Coverage
Newborn Care in Hospital (Routine)	25% after deductible	25% after deductible	No Coverage

Additional Services

Inpatient Hospital	25% after deductible	25% after deductible	No Coverage
Outpatient Surgery	25% after deductible	25% after deductible	No Coverage
Lab & X-ray Outpatient (minor)	25% after deductible	25% after deductible	No Coverage
Hospital Emergency Care (True Emergency Only)	25% after deductible	25% after deductible	No Coverage
Chiropractic	25% after deductible	25% after deductible	No Coverage

Patient Choice

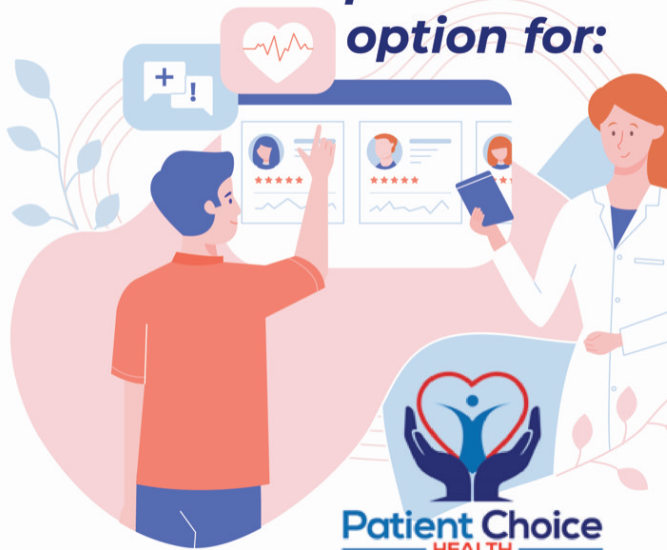
Outpatient Surgery - Patient Choice	\$0 after deductible (when using Patient Choice network)		
Complex/Major Imaging - Patient Choice	\$0 after deductible (when using Patient Choice network)		

Refer to plan documents for limitations and additional information.

HD - Medical Plan (continued)

Features	Your Memorial Hermann Health Network Costs	Your Cigna Network Costs	Your Out-of-Network Costs
Preventative Care*			
Well-Child Care	Plan pays 100%, no deductible	Plan pays 100%, no deductible	No Coverage
Well-Woman Care	Plan pays 100%, no deductible	Plan pays 100%, no deductible	No Coverage
Routine Screening Mammography	Plan pays 100%, no deductible	Plan pays 100%, no deductible	No Coverage
Adult Health Assessments	Plan pays 100%, no deductible	Plan pays 100%, no deductible	No Coverage
Immunizations	Plan pays 100%, no deductible	Plan pays 100%, no deductible	No Coverage
Screening Colonoscopy	Plan pays 100%, no deductible	Plan pays 100%, no deductible	No Coverage

*Subject to Affordable Care Act requirements.



Patient Choice Network
provides a ***low/no out-of-pocket**
option for:

- Outpatient surgeries, such as:**
 - Shoulder Surgery
 - Knee Surgery
 - Hernia Surgery
- Complex/major imaging.**
 - MRI's
 - CAT Scans
 - PET Scans
- Rehabilitation Therapies**
 - Physical Therapy
 - Occupational Therapy
 - Cardiac Therapy
 - Speech Therapy

Low/no deductible needs to be met and zero co-pay
*Basic HD Plan requires deductible.

Contact Us:
888.557.8550
UBC@patientchoicehealth.com

Patient Choice HEALTH

Primary - Medical Plan

Overview

The Humble ISD Primary Plan is designed to provide members and their families a copay-based plan offering for Primary Care, Specialist and Urgent Care visits, in exchange for moderate monthly premiums and higher out-of-pocket maximums. With two options for in-network benefits, no need for physician referrals, and free generic drugs, this plan provides affordable access to care with additional flexibility and cost transparency for services.

Covered	Monthly Premium
• Employee	• \$70
• Employee + Spouse	• \$720
• Employee + Child(ren)	• \$335
• Employee + Family	• \$925



Primary - Plan quick-reference

Refer to plan documents for limitations and additional information.

Primary - Medical Plan

Features	Your Memorial Hermann Health Network Costs	Your Cigna Network Costs	Your Out-of-Network Costs
Annual Deductible	\$1,500 individual \$3,000 family	\$3,000 individual \$6,000 family	No Coverage
Coinsurance (after the annual deductible)	25% after deductible	25% after deductible	No Coverage
Annual Out-of-Pocket Maximum	\$9,500 individual \$19,000 family	\$9,500 individual \$19,000 family	No Coverage
Physician Services			
Office Visits - Primary	\$20 copay	\$50 copay	No Coverage
Office Visits - Specialist	\$50 copay	\$100 copay	No Coverage
Next Level Urgent Care/Clinics	\$0 copay	\$0 copay	No Coverage
Urgent Care	\$50 Copay	\$100 copay	No Coverage
Emergency Room (True Emergency Only)	25% after deductible	25% after deductible	No Coverage
Non-Emergency Use of Emergency Room	50% after deductible	50% after deductible	No Coverage
Prescription Drugs			
Drug Deductible	\$500 Brand / Specialty ONLY		
Generic (30/90 Day Supply)	\$0 Retail and Mail Order		
Preferred Brand	30% Retail / \$400 Mail Order		
Non-Preferred Brand	30% Retail / \$400 Mail Order		
Specialty	30% up to a max of \$1,500 per script		
International Mail-Order	\$0 Brand/Specialty (no deductible)		

Refer to plan documents for limitations and additional information.

Primary - Medical Plan (continued)

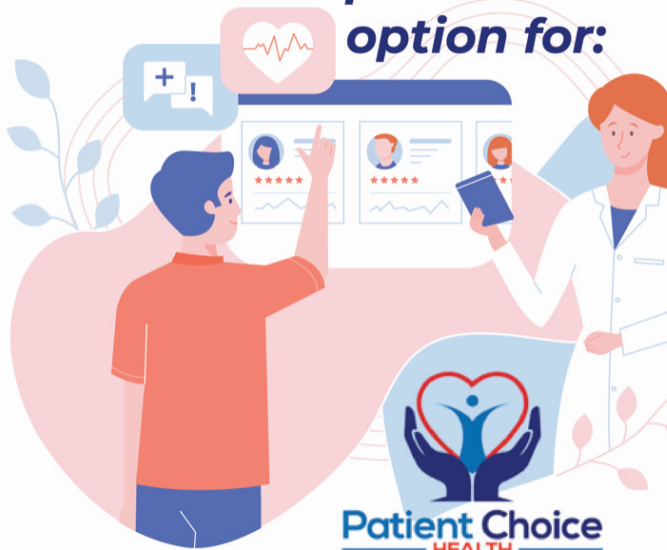
Features	Your Memorial Hermann Health Network Costs	Your Cigna Network Costs	Your Out-of-Network Costs
Maternity Services			
Routine Prenatal Care	25% after deductible	25% after deductible	No Coverage
Delivery in Hospital	25% after deductible	25% after deductible	No Coverage
Newborn Care in Hospital (Routine)	25% after deductible	25% after deductible	No Coverage
Additional Services			
Inpatient Hospital	25% after deductible	25% after deductible	No Coverage
Outpatient Surgery	25% after deductible	25% after deductible	No Coverage
Lab & X-ray Outpatient (minor)	25% after deductible	25% after deductible	No Coverage
Hospital Emergency Care (True Emergency Only)	25% after deductible	25% after deductible	No Coverage
Chiropractic	25% after deductible	25% after deductible	No Coverage
Patient Choice			
Outpatient Surgery - Patient Choice	\$0 (when using Patient Choice network)		
Complex/Major Imaging - Patient Choice	\$0 (when using Patient Choice network)		

Refer to plan documents for limitations and additional information.

Primary - Medical Plan (continued)

Features	Your Memorial Hermann Health Network Costs	Your Cigna Network Costs	Your Out-of-Network Costs
Preventative Care*			
Well-Child Care	Plan pays 100%, no deductible	Plan pays 100%, no deductible	No Coverage
Well-Woman Care	Plan pays 100%, no deductible	Plan pays 100%, no deductible	No Coverage
Routine Screening Mammography	Plan pays 100%, no deductible	Plan pays 100%, no deductible	No Coverage
Adult Health Assessments	Plan pays 100%, no deductible	Plan pays 100%, no deductible	No Coverage
Immunizations	Plan pays 100%, no deductible	Plan pays 100%, no deductible	No Coverage
Screening Colonoscopy	Plan pays 100%, no deductible	Plan pays 100%, no deductible	No Coverage

*Subject to Affordable Care Act requirements.



Patient Choice Network
provides a ***low/no out-of-pocket**
option for:

- Outpatient surgeries, such as:**
 - Shoulder Surgery
 - Knee Surgery
 - Hernia Surgery
- Complex/major imaging.**
 - MRI's
 - CAT Scans
 - PET Scans
- Rehabilitation Therapies**
 - Physical Therapy
 - Occupational Therapy
 - Cardiac Therapy
 - Speech Therapy

Low/no deductible needs to be met and zero co-pay
*Basic HD Plan requires deductible.

Contact Us:
888.557.8550
UBC@patientchoicehealth.com

Patient Choice HEALTH

FINDING A DOCTOR IN OUR DIRECTORY IS EASY



Is your doctor or hospital in your plan's Cigna network? Cigna's online directory makes it easy to find who (or what) you're looking for.

SEARCH YOUR PLAN'S NETWORK IN FOUR SIMPLE STEPS



Step 1

Go to [Cigna.com](https://www.cigna.com), and click on "Find a Doctor" at the top of the screen. Then, under "How are you Covered?" select "Employer or School."



Step 2

Change the geographic location to the city/state or zip code you want to search. Select the search type and enter a name, specialty or other search term. Click on one of our suggestions or the magnifying glass icon to see your results.



Step 3

Answer any clarifying questions, and then verify where you live (as that will determine the networks available).



Step 4

Optional: Select one of the plans offered by your employer during open enrollment. **(OAP) Network Open Access Plus**

That's it! You can also refine your search results by distance, years in practice, specialty, languages spoken and more.

Search first. Then choose Cigna.

There are so many things to love about Cigna. Our directory search is just the beginning.

After you enroll, you'll have access to [myCigna.com](https://mycigna.com) – your one-stop source for managing your health plan, anytime, just about anywhere. On [myCigna.com](https://mycigna.com), you can estimate your health care costs, manage and track claims, learn how to live a healthier life and more.

Questions? Call **1-800-Cigna24**

Together, all the way.®



Offered by: Cigna Health and Life Insurance Company, Connecticut General Life Insurance Company or their affiliates.

Providers and facilities that participate in the Cigna network are independent practitioners solely responsible for the treatment provided to their patients. They are not agents of Cigna. Product availability may vary by location and plan type and is subject to change. All group health insurance policies and health benefit plans contain exclusions and limitations. For costs and details of coverage, see your plan documents.

All Cigna products and services are provided exclusively by or through operating subsidiaries of Cigna Corporation, including Cigna Health and Life Insurance Company (CHLIC), Connecticut General Life Insurance Company, Cigna Behavioral Health, Inc., and HMO or service company subsidiaries of Cigna Health Corporation, including Cigna HealthCare of Arizona, Inc., Cigna HealthCare of California, Inc., Cigna HealthCare of Colorado, Inc., Cigna HealthCare of Connecticut, Inc., Cigna HealthCare of Florida, Inc., Cigna HealthCare of Georgia, Inc., Cigna HealthCare of Illinois, Inc., Cigna HealthCare of Indiana, Inc., Cigna HealthCare of St. Louis, Inc., Cigna HealthCare of North Carolina, Inc., Cigna HealthCare of New Jersey, Inc., Cigna HealthCare of South Carolina, Inc., Cigna HealthCare of Tennessee, Inc. (CHC-TN), and Cigna HealthCare of Texas, Inc. Policy forms: Medical: OK-HP-APP-1 et al., OR-HP-POL3802-13, TN-HP-POL43/HC-CER1V1 et al. (CHLIC); GSA-COVER, et al. (CHC-TN). The Cigna name, logo, and other Cigna marks are owned by Cigna Intellectual Property, Inc.

880087 g 08/19 © 2019 Cigna. Some content provided under license.



Reverse your condition. Redefine what's possible.

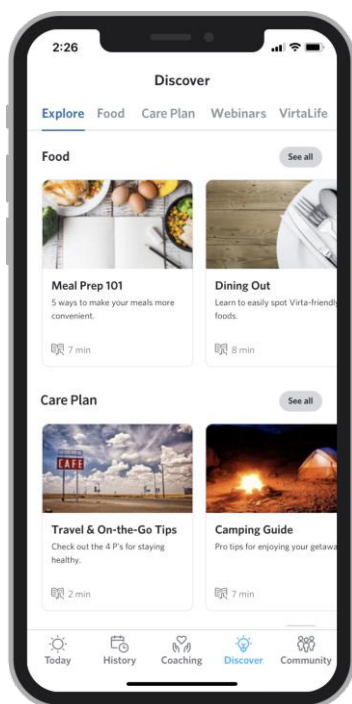


10-week member
clinical trial results¹:

18lbs
Average weight loss

1.0
Average A1C reduction

87%
Stopped/reduced insulin



Try nutrition therapy from Virta Health at no cost*

As a virtual clinic for type 2 diabetes reversal and prevention, Virta helps members use food as medicine to lose weight, lower A1C, and reduce medication needs. No calorie counting or gym visits required.

The American Diabetes Association believes that there's no such thing as a diabetes diet² and Virta agrees. With provider support, coaching, and technology, members learn what nutrients (carbs, fats, and proteins) they personally need more of, And less of, to improve health naturally.

Virta is \$0 for individuals and dependents with an eligible condition.

The Virta Difference

- Nutrition not calorie restriction. Eat until you feel full.
- Personalized over one-size. Your plan covers your needs & tastes.
- About the journey not the judgement. Get caring providers and coaches.

Schedule a free consultation to learn more:
virtahealth.com/join/humble-isd

Virta Health defines reversal as reaching HBA1c below 6.5 without the use of diabetes medications beyond metformin. Diabetes and related issues can return if lifestyle changes are not maintained.

¹ McKenzie AL et al. JMIR Diabetes 2017.

² Avert AB, et al. Diabetes Care 1. May 2019.

* Humble ISD fully covers the cost of Virta (valued at over \$3,000) for you and your eligible family members with type 2 diabetes, type 1 diabetes, or prediabetes. Virta is also covered for those with a BMI of 27 or greater who are interested in safe and sustainable weight loss.





Welcome to LucyRx

We're glad you're here.

Prescription care should work as it was intended—clear, affordable, and centered around you. That's why LucyRx exists: to help you get the medicine you need, with the clarity and support you deserve.

Whether it's a one-time prescription or something more complex, you're not alone—we're here to help.





Who We Are

LucyRx is your prescription care partner. We're independent, experienced, and built to make getting your medicine easier—from everyday needs to complex care.

We deliver better results through a nationwide pharmacy network, flexible plan designs, and convenient 90-day options—whether through home delivery or retail.

Behind the scenes, our proprietary, AI-powered analytics platform—LucyIQ™—helps your benefit work smarter, supporting the right care at the right cost, every time.

We serve more than 1,200 organizations across the country. But what matters most is you—and helping make your health journey easier, every step of the way.





Getting Started with Your LucyRx Benefit

Here's how to start using your benefit and access support:

- 1 Check your ID card**
Look for the LucyRx logo on the insurance card you received from Allegiance to confirm your prescription coverage. If you're unsure, ask your employer or contact our 24/7 Prescription Care team.
- 2 Show your card at the pharmacy**
When filling a prescription, show your insurance card at the pharmacy so they can process your coverage correctly.
- 3 Register online**
Visit www.lucyrx.com/members to create your digital account and view your plan details.
- 4 Download the app**
Use the LucyRx app (available in the App Store and Google Play) to manage your prescriptions anytime, anywhere.



We're proud to be on your care team.
Let's make this easier—together.



Access Your Care, Anywhere

With LucyRx, managing your prescriptions is just a tap away.
Use our mobile app or online portal to:



Track and refill prescriptions



Get refill reminders and alerts



Compare medication prices



Access your digital ID card



Locate in-network pharmacies

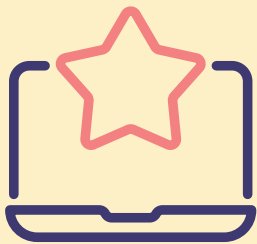


Check medication status or coverage



View your medication history

Your health information is always private and secure. You focus on your health—we'll take care of the rest.



How to Register for Your Digital Account

1. Visit www.lucyrx.com/members
2. Click "Let's Go to My Benefits" and follow the prompts to select "Register Now"
3. Enter the details on your insurance card and create your username and password
4. Log in via desktop, mobile, or the LucyRx app

If you're experiencing a medical emergency, call 911 or go to the nearest emergency room.

For all other medication or benefit questions, our 24/7 Prescription Care team is here to help.



We're Here When You Need Us

Have a question about your prescriptions? Need help finding a pharmacy or checking coverage? Our U.S.-based team is available 24/7—in 200+ languages—to get you the answers you need.

Call us anytime at 877-860-8846 or visit www.lucyrx.com/members

When you reach out, you'll talk to a trained specialist who can:

- ✓ Explain your LucyRx benefit
- ✓ Check coverage and medication details
- ✓ Help you find lower-cost options
- ✓ Resolve refill or delivery issues
- ✓ Connect you with a pharmacist if needed



At LucyRx, we don't just answer calls—we solve problems.



90-Day Convenience, Your Way

With LucyRx, you have options for getting a 90-day supply of your eligible maintenance medications—wherever it works best for you:

Your Local Pharmacy

Get your 90-day supply filled at one of over 60,000 pharmacies nationwide. Prefer Walmart, H-E-B, or Target? You can stick with the places you already shop.

Home Delivery

Want your medications shipped to your door? Use Walgreens Mail Service for home delivery—plus refill reminders, tracking, and copay tools included.

Getting Started:



Online:

Visit [walgreensmailservice.com](https://www.walgreensmailservice.com) to register. Once you're set up, you'll receive instructions for placing your first order.



By phone:

Call 877-787-3047. Have your insurance info ready.



Specialty Medications Made Simple

Some medicines are more complex.

If you're taking a specialty drug for a condition such as cancer, arthritis, or multiple sclerosis—LucyRx is here to help.

We don't just send your prescription to a pharmacy and hope for the best. We've built a smarter way to support you—with the care, service, and savings you need.

Personalized Support for Your Treatment

No two conditions—or members—are the same. Our Care Guides take the time to understand your situation and match you with the right pharmacy, support, or savings program.

Here's how it works:

LucyRx Care Guides Who Help You One-on-One

1

Our LucyRx Care Guides are trained nurses, pharmacists, and pharmacy techs. They're here to help you:

- Get your medicine approved
- Learn how to take it safely
- Understand what to expect during treatment
- Find ways to save money

**You can call anytime—or wait for us to reach out.
We'll walk you through what comes next.**

Specialty Medications Made Simple: Where You'll Get Your Medication

2

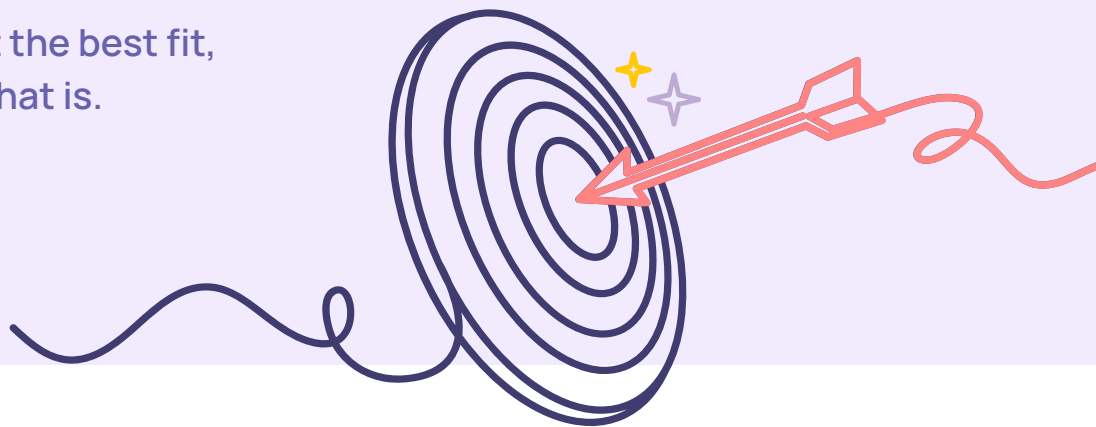
Most PBMs ship from large central pharmacies—often far from where care happens. LucyRx does things differently.

We've partnered with more than 100 health systems that operate specialty pharmacies inside their hospitals and clinics—so members can fill prescriptions where they already get care.

This can mean:

- Faster access to your medication
- In-person conversations with your pharmacist
- Better coordination between your care team and your pharmacy
- Quicker help when something's not working

If a local pharmacy isn't the best fit,
we'll guide you to one that is.





Specialty Medications Made Simple: Getting Help with Cost

3

Specialty drugs can be expensive—but LucyRx helps lower what you pay.

When your prescription is submitted, our Care Guides check for savings opportunities. If there's a better option, we'll call you and walk you through it.

We may be able to:

- **Lower your copay** – We can often apply a coupon or discount without changing your pharmacy
- **Help you get your medicine for free** – In some cases, we connect you to trusted programs or pharmacies that cover the full cost
- **Offer a safe, lower-cost alternative** – If another version of your drug works the same but costs less, we'll help you understand your options
- **Provide extra support** – For complex conditions, we may connect you with a pharmacist or nurse who checks in regularly and helps manage your treatment

**We don't wait for you to ask. If there's a way to save, we'll reach out.
And if you ever have questions, just call—we're here to help.**

Specialty Medications Made Simple: What Happens Next

4

- 1. Your doctor sends your prescription to a LucyRx specialty pharmacy**
(We'll make sure it goes to the best option in our trusted network.)
- 2. A LucyRx Care Guide reaches out to you**
(No need to call—we'll connect with you directly.)
- 3. We help you get started with the right pharmacy and support**
(From benefits to side effects, we've got you covered.)
- 4. You get your medication—and the help that comes with it**
(Coaching, savings, and guidance are all part of the package.)

Need help at any point? Your LucyRx
Care Guide is just a call away.





Support for Specialty Needs

If you're managing a complex condition, where you fill your prescription **matters**. Your LucyRx Care Guide will help route it to a pharmacy that works closely with your care team—so you get the right medication, with the right support, from day one.

This team of nurses and pharmacists offer personalized support to help you:

- ✦ Understand your medications and treatment options
- ✦ Access financial assistance and coverage guidance
- ✦ Navigate prior authorizations
- ✦ Stay on track—clinically and financially

So where will you actually get your medicine?

Let's walk through how your specialty prescription is filled—and how we make it as simple and supportive as possible.

Filling a specialty prescription

When you're managing a complex condition, getting your medication from the same place you get your care just makes sense.

That's why many specialty prescriptions can be filled at local pharmacies located inside the hospital or clinic where you're being treated. These pharmacies offer:

- ✓ Faster access to your medication
- ✓ Help from a pharmacist who knows your care team
- ✓ A simpler experience with fewer steps



How LucyRx Helps You Save

We know medications can be expensive. That's why we look for ways to help you save—before you even ask.

Our Care Guides are here to help you save in ways you might not expect. If there's a better option for your medication, we'll reach out to walk you through the next step. And it's not just for specialty drugs—we help members save across all types of prescriptions, too.

Here are just a few of the ways we help members lower their costs:

We help you switch to a lower-cost version of your medication—when it makes sense

If there's a safe alternative—like a generic or another option that works the same but costs less—we'll explain your choices and help you make the switch without disrupting your care.

We help with copay discounts

You may qualify for a coupon or manufacturer program that lowers your cost. We'll handle the paperwork and get you enrolled.

We look into pharmacy options—even international

For certain medications, we may be able to help you access lower-cost pricing through trusted pharmacies outside the U.S.

We connect you to free medicine programs

If a medication is too expensive—even with insurance—we'll check if you qualify for programs that cover the full cost.

Not sure if you're paying too much? We'll check for savings—and help you make the switch if there's a better option.



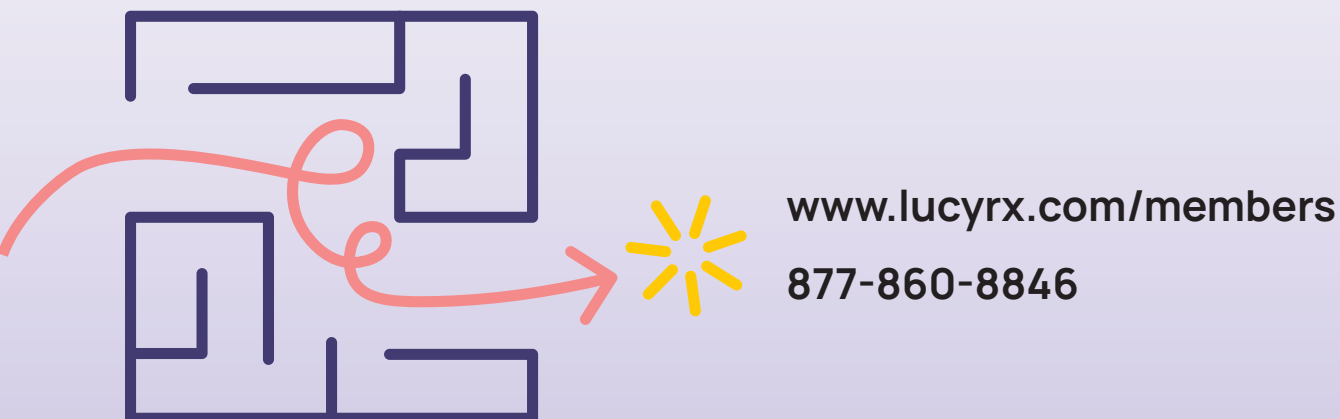


We're With You All the Way

Whether it's your first prescription or your fiftieth, LucyRx is here to make prescription care clearer, more affordable, and built around you.

Need a hand? We've got you.

Whether it's cost, access, or something unclear—we'll help you sort it out, every time.





Virtual Urgent Care

Getting Started

INTRODUCTION

Access board-certified physicians 24/7, 365 days a year for urgent medical needs. Doctors will discuss your symptoms, confirm a diagnosis, and prescribe any needed medication. Video and telephone-based visits are available, with an average wait time of just ten minutes.

Consult Fee: \$0

HOW TO ACCESS

01

Sign up with the Recuro Care app or visit the webpage below to access:
["member.recurohealth.com"](https://member.recurohealth.com)

02

Enter your employer member ID

03

Create your username and password

04

Complete your medical history

05

Schedule your consult

*Registering your account is not required to use the service, you can call 855.6RECURO anytime for 24/7 access to doctors.



Example Conditions Treated

- Acne / Rash
- Allergies
- Cold / Flu
- GI Issues
- Ear Problems
- Fever
- Insect Bites
- Nausea
- Pink Eye
- Respiratory
- UTI's
- And More...



customerservice@recurohealth.com | 855.6RECURO | Scan QR Code to Download





Virtual Therapy

Getting Started

INTRODUCTION

Receive comprehensive therapy and counseling from Recuro's Clinical Social Workers and Marriage & Family Therapists. Your therapist will work with you to reach your emotional wellness goals, developing a personalized plan and tracking progress over time.

HOW TO ACCESS

01

Sign up with the Recuro Care app or visit the webpage below to access:
["member.recurohealth.com"](https://member.recurohealth.com)

02

Enter your employer member ID

03

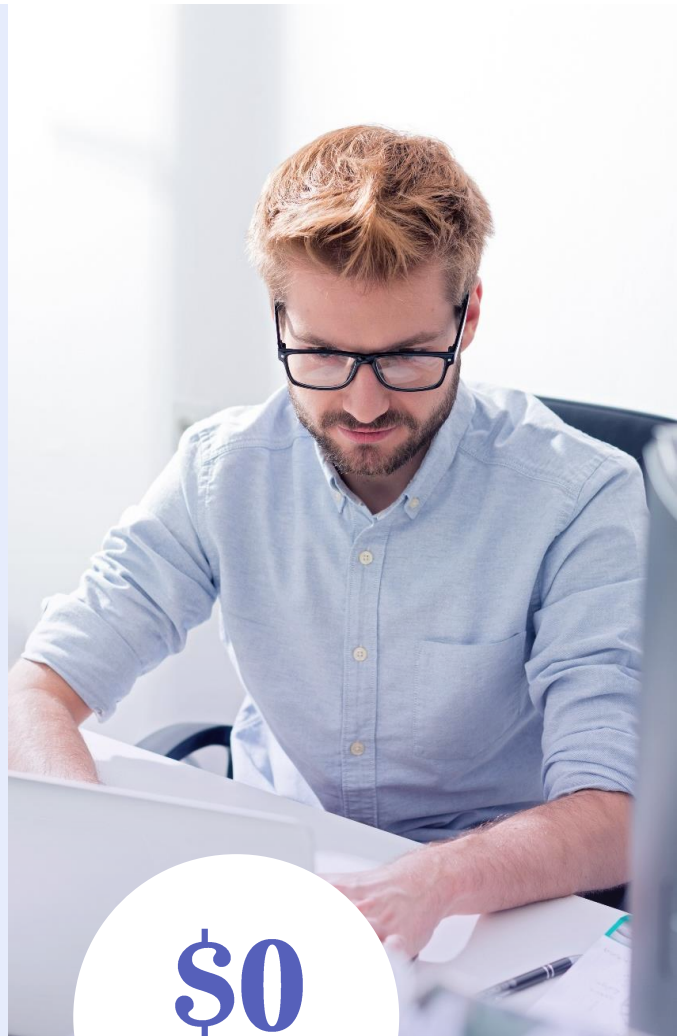
Create your username and password

04

Complete intake and wellness assessment

05

Schedule your consult



\$0

Consults

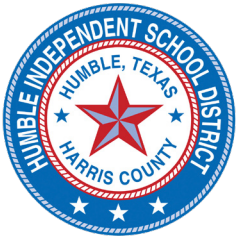
Example Conditions Treated

- Anger Mgmt
- Anxiety
- Bipolar
- Depression
- Eating Disorder
- Sleep Disorder
- Addiction
- Substances
- Grief / Loss
- PTSD
- OCD
- And More...



customerservice@recurohealth.com | [855.6RECURO](tel:855.6RECURO) | Scan QR Code to Download





Humble ISD



NEXT LEVEL URGENT CARE Services Now Available

26+ locations to serve you including 3 Humble ISD locations

9729 Farm to Market 1960 Bypass, Humble, TX 77338

7120 FM 1960, Humble, TX 77346

4435 Kingwood Dr., Kingwood, TX 77339

Open 9 a.m. – 9 p.m. | 7 Days a Week!

\$0 copay for Primary
Plan members.

\$25 co-pay for High Deductible
(HD) plan members until your
deductible is met.

COMMON CONDITIONS WE TREAT

Ear infections • Cold/flu
Cough/Sore throat • Minor burns
Lacerations • Rash/skin infections
Sprains • Broken bones
Dehydration • STDs



3 WAYS TO GET IN LINE

- X Call 281-783-8162
- X Get in line online: nextlevelurgentcare.com
- X Text "NLUCAPP" to 313131 to download the APP



nextlevelurgentcare.com

Medical Plan Benefits Questions?



ubc-benefits.com/humbleisd-benefits
(case sensitive)

help@ubc-benefits.com

Specific Medical Coverage Questions?



Allegiance Customer Service Line:

(855) 999-6810

Questions About Prescription Cost and Coverage?



LucyRx Help Line

(877) 860-8846

